



DCB

Global Center for
Technology Innovation
in Diabetes

Annual Report 2024/25

Foreword



Derek Brandt
CEO

Dear readers,

The year 2024 was marked by progress, collaboration, and an unwavering commitment to innovation at the Diabetes Center Berne (DCB). As a foundation with a clear mission – to significantly improve the quality of life for people with diabetes – we look back with pride and gratitude on a year full of milestones, inspiring partnerships, and promising developments.

Medical advances in the field of diabetes continue at a remarkable pace. At the same time, the challenge remains: turning research findings and technological innovation into real-life solutions for those affected. This is precisely where the DCB comes in. We support promising projects, empower start-ups, and work closely with research institutions, industry partners, and people with diabetes – to create impactful, lasting solutions.

In 2024, we were able to expand many of our initiatives and set new priorities. Particularly noteworthy was the strategic development of our innovation platform, which allows us to provide targeted support to emerging companies – through funding, scientific guidance, and access to a strong network. Several of these start-ups made significant progress in the past year, with some bringing their first products to market – a powerful sign that our model is working.

Another highlight was the growing international visibility of the DCB. Our partnerships with leading research institutions at home and abroad have deepened, new collaborations have been initiated, and our expertise has been shared at global conferences. This international network is essential to develop solutions for one of the world's most widespread chronic conditions.

None of this would be possible without the dedication, passion, and vision of so many people. We extend our heartfelt thanks to our employees, funding partners, supporters, and all those living with diabetes who share their experiences and perspectives with us. Your contributions are what make DCB a place of connection, innovation, and real-world impact.

With this annual report, we want to give you a transparent and comprehensive look into our work – and share what drives us every day. We invite you to discover the stories, projects, and people that shaped our 2024. Thank you for being part of our journey toward a better future for everyone living with diabetes.

Warm regards,

Derek Brandt

Index

Foreword	3
Index	5
Our Vision	6
Our Mission	7
DCB-Facts	8
DCB 5-Year Goals (2029)	8
The DCB-Team	9
DCB-Teams	10
<i>Data Team</i>	10
<i>Innovation & BD Team</i>	14
<i>Clinical Team</i>	21
<i>Communication Team</i>	28
<i>Operations Team</i>	30
Research	31
<i>samlab (Sensing & Monitoring Lab)</i>	32
<i>PrecisionLab</i>	36
<i>Trim Lab</i>	40
<i>Machine Learning in Medicine Lab</i>	43
<i>INSPIRE Lab</i>	48
Quality	49
Imprint	50

Our Vision

There are various pieces that make up the puzzle of our vision and mission but it all boils down to one thing

Making life better for people with diabetes

Our Mission

Technology

We live diabetes technology.

Solutions

Together with our professorships, we translate ideas into solutions.

Well-being

We make a positive impact to reduce healthcare costs and improve environmental & social wellbeing.

Expertise

We close gaps by providing expertise, services, funding and a home for people with great ideas, projects and ventures.

Community

We identify unmet needs by involving the diabetes community.

Innovation

We are the one-stop center to co-create diabetes innovation.

Professional network

We establish an international and interdisciplinary network of trusted partners to collaborate and co-create the future of diabetes management.

Collaborative mindset

We create an atmosphere of trust, entrepreneurial spirit, and collaborative mindset – a fun team to work with.

DCB-Facts

ISO 9001:2016 certified: 23.08.2025 to 22.08.2028

21

Team members

4

Professorships

3

In-house
clinical Studies

380h

Mentoring and
training

100

Ideas submitted to the
Innovation Challenge

35

Countries from which
ideas originate

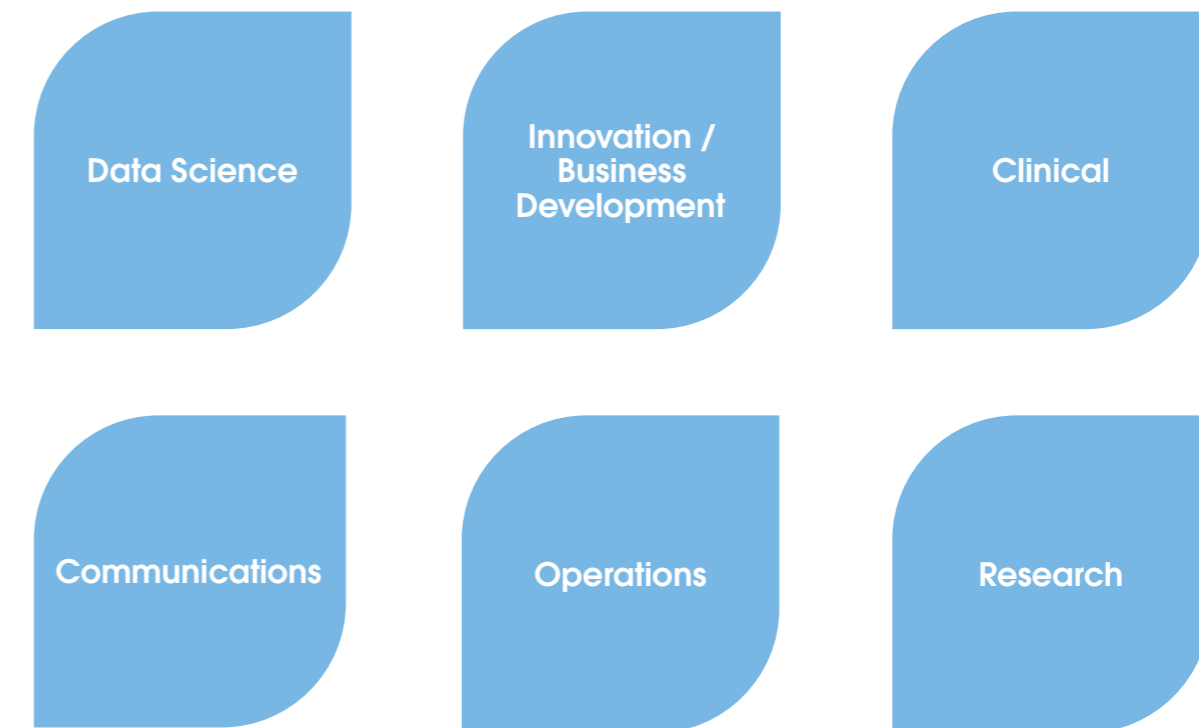
DCB 5-Year Goals (2029)

- Leading European centre for diabetes technology
- Professorships as beacons for the DCB
- Established partner for clinical development
- Vibrant innovation and start-up environment
- Market-ready products supported by the DCB
- Great place to work

The DCB-Team

The DCB now consists of 21 employees, as well as the associated research groups of Professors Lilian Witthauer (Sensing & Monitoring Lab), José Garcia-Tirado (PrecisionLab), Lisa Koch (Machine Learning in Medicine Lab) and Maria Luisa Balmer (TrimLab) as well as Dr. Maren Schinz (INSPIRE Lab).

Several holocratically organised teams work together to implement the DCB vision:



DCB-Teams

Data Team

Objectives / Activities / Priorities

Building a High-Performance Data Infrastructure and Developing Intelligent Data Products

- *Collaboration with start-ups and industry through statistical support*
- *Contribution to the development and validation of algorithms using state-of-the-art data science*
- *Enabling the collection of clinical data by implementing and maintaining REDCap projects*
- *Building a data infrastructure to support research and development in diabetes technology*

Team



Dr. Vincent Braunack-Mayer
Senior Data Scientist



Aritz Lizoain
Statistician



Dr. Simona Rossi
Clinical Data Manager



Dr. Martina Rothenbühler
Scientific Program Manager |
Data Protection Officer

Projects

Analysis of study data from a novel non-invasive glucose measurement method

The methods currently available for measuring blood sugar, whether intermittent or continuous, are invasive. A non-invasive glucose measurement method could remove this barrier and make blood sugar monitoring easier and more accessible for people with prediabetes or for healthy individuals.

On behalf of Liom Health AG, the Data Team analyzed data from a prospective, exploratory clinical study. The study investigated a novel spectroscopy-based system for non-invasive glucose measurement. The aim was to develop and validate an AI-supported computational model for continuous glucose monitoring without individual calibration.

A total of 20 adults with insulin-dependent diabetes mellitus participated in the study. Fifteen of them were used for algorithm development and five for validation. The model achieved a mean absolute relative difference (MARD) of 14.5%. In addition, 96.5% of the measured glucose values were in the A and B zones of the Diabetes Technology Society's error grid, i.e., within the clinically acceptable range.

The results suggested that Raman spectroscopy, combined with modern computer-based methods, can enable continuous, non-invasive glucose monitoring without person-specific calibration. This represents a promising approach to improving blood glucose monitoring.

DCB eConsent

Since 2022, DCB has been hosting its own instance of REDCapj, a secure, web-based platform designed for creating and managing online surveys and databases used in clinical research and data collection. DCB continues to actively expand and enhance its REDCap capabilities, and recently integrated the eConsent framework.

This eConsent integration offers valuable functionality to support participant recruitment and retention by improving the overall consent experience. It

enables more direct and engaging interactions with participants and aligns with the growing trend toward pragmatic clinical trials. The new eConsent framework strengthens DCB's capacity to conduct trials autonomously and supports the implementation of decentralized clinical trial models.

Early detection of prediabetes with the help of wearables

The use of wearable devices is steadily increasing in numerous areas of application. As part of a collaboration with the GAPP health cohort 'Genetic and phenotypic determinants of blood pressure and other cardiovascular risk factors' in Liechtenstein, DCB is pursuing the goal of researching physiological parameters related to glycemic variability in people with prediabetes. Identifying possible correlations between these data could help address a significant public health issue that affects millions of people worldwide.

The main objective of the study is to investigate and evaluate the potential of commercial wearable devices for detecting prediabetic symptoms and identifying individuals at increased risk of developing type 2 diabetes.

A total of 200 participants will be observed in a case-control study, including 100 healthy individuals and 100 with prediabetes based on their HbA1c levels. Participants will wear both a commercial wearable device (the Oura Ring) and a continuous glucose monitoring system for a period of 20 days. The Oura Ring is a waterproof, commercially available multi-sensor wearable device that measures heart rate, heart rate variability, skin temperature, oxygen saturation, respiratory rate, movement, and sleep duration and quality, among other things. At the same time, the continuous glucose monitoring system serves as a reference for monitoring glucose variability.

By the end of March 2025, 54 participants had already been successfully enrolled in the study.

Menstrual cycle induced fluctuations in insulin sensitivity

Data collection of the joint research project between Tidepool, a non-profit US organisation specialising in the development of open-source software for diabetes management, and DCB has been closed end of December 2024. In total, 61 women provided data on insulin, glycemia, carbohydrate intake and menstrual cycle information, amounting to over 300

menstrual cycle worth of data of women with type 1 diabetes using an AID system. The data is currently being analysed and will be published in a peer-reviewed journal in 2025.

Innovation & BD Team

Objectives / Activities / Priorities

Fostering a Dynamic Innovation and Start-up Environment



- **Expanding Global Network and Visibility:** Hosted the Innovation Zone at EASD in Madrid with over 10 start-ups and the „Ignite“ event at ATTD in Amsterdam.
- **Organizing Events:** Successfully organized the annual Open Innovation Challenge and other events in Switzerland.
- **Collaborations:** Partnered with the Diabetes Technology Society and participated in their Diabetes Technology Meeting in San Francisco, USA.
- **Trend Identification and Awareness:** Identified trends, raised awareness, and scouted in the field of diabetes technology worldwide with our community.
- **Support for Start-ups:** Provided ongoing support for start-ups through tailored services, leveraging our in-house expertise and global network, accommodating projects of various sizes from small to large-scale.

Team



Derek Brandt
CEO



Hanne Ballhausen
Project Manager Innovation



Greta Ehlers
Business Scout



Ema Grabenweger
Innovation Manager



Dr. Maren Schinz
Innovation Manager



Simon Schwaighofer
Business Development



Cordelia Trümpy
Project Manager

DEVICES

- BOYDSense, GlucoSet, ECLYPIA, MYNERVA, GO-PEN, fada medical, DIATECH DIABETES, Votis, Nimble, pionic, luna

DIGITAL

- UNA, SNAQ, smartstart, meala, enhance-d, DiappyMed, SPOTLIGHTAQ, heyPatient, Diabetotech, Blue Circle Diabetes Foundation, Type 1 from Day 1, TOM, Gluroo, escape your habit

COMMUNITY

- beat diabetes, #dedoc, Swiss Diabetes Kids

ARTIFICIAL PANCREAS & BIOLOGICAL FEEDBACK

- OPEN

OUTREACH

- Glucose toujours

- funded by Swiss Diabetes Venture Fund

DCB Innovation Ecosystem

Projects

Innovation Challenge '24

The DCB Open Innovation Challenge has once again proven to be a great success, with a record-breaking 100 applications, further expanding our vibrant diabetes tech community. For the first time, we collaborated with the Diabetes Technology Society in San Francisco, USA, which supported us with dissemination activities and mentoring for our Top 20 participants. The final six projects from Switzerland, the UK, Spain, Sweden, and the USA participated in a one-week intensive bootcamp in Switzerland. The bootcamp culminated in the DCB Start-up Night and Awards Ceremony on October 3rd in Berne, attended by around 300 guests.

The international jury selected Muhammad

Mujeeb-U-Rahman from Integrated Medical Sensors (IMS) as the winner for their product CGM+. CGM+ impressed the expert jury with its revolutionary, small, and minimally invasive device for continuous glucose monitoring (CGM). This world's first fully integrated single-chip device monitors blood glucose using multiple sensors simultaneously and can also record other physiological parameters such as tissue temperature and ketones – all with just one device.

The start-up Beep Insights was honoured with the Public Choice Award by the audience for its Beep app, which estimates insulin resistance using lactate measurement and other data such as activity and nutrition.



Lived Experience Panel

With a dedicated group of 19 experts who live with diabetes every day, we are now offering additional services to our ecosystem to leverage their invaluable insights. These powerhouses can be included in surveys, interviews, focus groups, and hired as beta testers. This initiative is gaining momentum, with

several members already participating in diverse projects. We look forward to expanding the panel into a broader community, fostering co-creation and collaboration to drive innovation in diabetes technology.



Diabetes Venture Fund (DVF)

The Diabetes Venture Fund brings together a unique constellation of partners to invest globally and with impact in exceptional start-ups across all areas of diabetes technology and related healthcare. This extends to areas such as chronic kidney disease, neuropathy, ophthalmics and wound care. The fund leverages the power, expertise and networks of Serpentine Ventures, the investment arm of the Swiss

Ventures Group, and the DCB. This enables the DVF to give our portfolio companies unique support on their journey to success, in ways that few other investors can.

A strong team with extensive experience investing in early stage healthcare, led by Investment Director Craig Cooper, is complemented by Investment

Committee members Simon Michel, Derek Brandt, Michael Stucky and Mike Baur, who independently assess all investment proposals.

For the latest information about the investments, please visit: <https://diabetesfund.vc/>

The diabetes investor, transforming the field with a world-class network.



DVF-Investments



GlucoSet’s intensive care monitoring solutions help hospitals minimise complications and costs. Their intravascular, hydrogel-based continuous glucose monitor continuously provides accurate glucose level information, making continuous glucose monitoring a reality on the ICU.



Healthcare professionals are often overwhelmed by the amount of data that CGM generates. OneTwo Analytics is helping relieve this burden with its AI-powered decision support tool for patient prioritisation and treatment. It transforms data into improved outcomes and quality of life and reduces costs for healthcare providers.



As populations age and diabetes becomes more prevalent, healthcare systems are increasingly struggling to cope with the problem of hard-to-heal wounds. To address this challenge, Piomic Medical has developed the COMS One therapy system, which promotes wound healing in chronic leg and foot ulcers.



Luna Health is aiming to address a major unmet need – automatic overnight glucose control for people who use insulin pens. They call it “AI”, which stands for “Automated Injections”. It’s a way to combine the convenience of insulin pens with the improved clinical outcomes of automated insulin delivery.

SUPERSAPIENS

Supersapiens is a sports performance brand that focuses on energy management systems designed to help athletes run faster for longer. Combined with the Libre Sense Glucose Sport biosensor from Abbott, Supersapiens provides informative data on the body's fuel reserves through continuous glucose measurement.



SNAQ's diabetes platform helps patients and health-care professionals make data-driven decisions about meals. Over 75,000 customers are already using their clinically validated and patented carbohydrate counting technology, which works through image analysis.



BOYDSense verbessert die Lebensqualität, indem es die Gesundheitsüberwachung mithilfe der Atmung einfach und schmerzfrei macht. Das erste Produkt des Unternehmens, Lassie, ermöglicht Menschen mit Diabetes eine genaue und nicht-invasive Blutzuckermessung. In Zukunft wird die Plattform Patient:innen und medizinischem Fachpersonal auch die Vorsorge, Erkennung und Überwachung in anderen Therapiebereichen ermöglichen, darunter Sepsis und Fettlebererkrankungen.

Clinical Team

Objectives / Activities / Priorities

Conducting clinical trials to support start-ups and research partners in evaluating the performance and safety of their ideas and products.



- *Conduct studies all the way from the development of the study design to the final report (one study completed; two studies running; two studies in development; several studies in the pipeline)*
- *Contributing to studies with specific knowledge in the areas of monitoring, data management, study management and statistics (two studies running; one study in preparation)*
- *Simplifying and improving the efficiency of clinical trial processes with regard to regulatory procedures and trial execution (implementation of decentralized study design)*
- *Advising partners on regulatory issues relating to clinical evaluation Strategy (two clinical evaluation plans)*
- *Grant submissions (one contribution and one on our own)*

Team



Constance Bischoff
Clinical Research Associate



Dr. Marie-Aline Gérard
Clinical Research Specialist



Stefanie Hossmann
Clinical Research Scientist |
Regulatory Affairs Manager



Dr. Martina Rothenbühler
Scientific Program Manager |
Data Protection Officer



Regula Schneider
Clinical Research Associate

Projects

SPN-005 Study

A Pilot Study to Assess the Feasibility of a Novel Non- Invasive Technology to Measure Glucose Dynamics in Adults Living with Type 1 Diabetes Mellitus: A Single-Arm Pilot Study

Diabetes mellitus is a chronic and potentially disabling disease that represents a major public health and clinical concern. Regular blood glucose measurements are part of the daily life and burden with this disease. New technologies to measure glucose level can contribute to reducing the burden of invasive methods of glucose monitoring.

Liom Health AG has developed a spectroscopic platform which detects and quantifies various biomolecules including glucose in real-time, continuously, noninvasively, in diverse bodily fluids but with an emphasis on peripheral blood and interstitial fluid by using state-of-the-art spectroscopy methods and machine learning algorithms. This non-invasive solution from Liom Health AG will provide people living with diabetes with an advanced way to monitor and control glucose levels conveniently and painlessly to self-manage their disease.

The Liom Health Lab demo 1.0 has been tested in 21 participants. During the study procedure, the blood glucose of volunteers living with type 1 diabetes is lowered by injecting insulin into a hypoglycaemic state then increased by injecting glucose into a hyperglycaemic state. This study aims at assessing the feasibility of Liom Health Lab demo 1.0 and associated computational models to detect glucose, estimate its concentration, and track glucose changes noninvasively (transcutaneous) and continuously across the entire clinically relevant range of glucose values.

Project status:

The study was approved by the Cantonal Ethics Committee of Bern and Swissmedic respectively on 05 and 09 November 2023. The first participant was enrolled on December 01, 2023, and the last patient last visit took place on May 16, 2024. The collected data was then analyzed, and the study report was sent to the authorities. The study is therefore completed.

Project site:

Universitätsklinik für Diabetologie, Endokrinologie, Ernährungsmedizin & Metabolismus (UDEM)
Inselspital, Universitätsspital

Principal investigator:

Prof. Dr. med. Markus Laimer

Sponsor: Liom Health Lab

Project funding: Sponsor's internal funds

DCB's Role:

As a Contract Research Organisation, we were delegated by the sponsor to support the clinical process, from the preparation of the clinical study plan, the submission of the approval by the Ethics Committee and Swissmedic, the monitoring of the site, the data cleansing and analysis to the preparation of the study report.

FibreGum Study

The number of overweight children and adolescents continues to rise in Switzerland, with long-term consequences for health and quality of life. In collaboration with Delica AG, the DCB supports the development and clinical evaluation of FibreGum, a chewing gum enriched with soluble fibre.

The aim is to promote microbial diversity in the gut, stimulate the production of health-promoting metabolic products, and at the same time reduce snacking behaviour. To assess its effectiveness, a randomised, placebo-controlled clinical study involving 105 children and adolescents with obesity is currently underway.

The study investigates whether FibreGum can be used as a simple and practical support in paediatric obesity therapy.

→ Further background on the projects of Prof. Dr. Maria Balmer can be found from p. 41.

Project status:

The study was approved by the Cantonal Ethics Committee of the Canton of Bern on 18 November 2022, and the extension to include a second study site in St Gallen was approved on 31 December 2024. To date, a total of 86 children and adolescents have participated in the study. Recruitment of the final participant is expected in summer, so that the research team may receive the study results in early 2026.

Project sites:

Children's Hospital, Inselspital, University Hospital Bern

Principal Investigator: Prof. Maria Luisa Balmer
Eastern Switzerland Children's Hospital, Adolescent Medicine, St Gallen

Principal Investigator: Dr. med. Pascal Müller

Sponsor:

Insel Gruppe AG

Project team:

Prof. Maria Luisa Balmer, Inselspital (University Hospital of Bern) and University of Bern (Project Leader); Dr Christoph Saner, Children's Hospital, Inselspital (University Hospital of Bern); Dr Marco Janner, Children's Hospital, Inselspital (University Hospital of Bern); Dr. Pascal Müller, Ostschweizer Kinderspital, Adoleszentenmedizin, St. Gallen, Prof. Dominik Meinel, FHNW University of Applied Sciences and Arts Northwestern Switzerland; Dr Alexandra Stähli, zmk bern – School of Dental Medicine (University of Bern); Valentina Huwiler, Inselspital (University Hospital of Bern) and University of Basel; Marie-Aline Gérard, Diabetes Center Berne

Project funding:

Diabetes Center Berne (research project), Von Tobel Foundation (research project), Walter Fuchs Foundation (research project), Swiss National Science Foundation (SNSF)

DCB's role:

Contract research organisation

Evo-Study

Evaluation of correlations between volatile organic compounds (VOCs) spectra measured with GC-IMS and MOx-sensors and venous blood glucose in subjects with Type 2 Diabetes

Breath analysis is a viable methodology for non-invasive diabetes management owing to its potential for multiple disease diagnosis. According to earlier studies, there is a strong relation between ketone bodies such as acetone and blood glucose variation among healthy subjects, T1D and T2D patients. However, the relevance of acetone as the sole biomarker for diabetes monitoring is uncertain.

BOYDSense, a start-up from France, has developed a prototype non-invasive breath analyzer (MIB) that measures a set of VOCs indicated in human studies to be sensitive to changes in blood glucose levels. This study has two main aims:

One aim is to identify VOC profiles of different blood glucose levels (normal and high) and their rising and falling patterns using a state-of-the-art measurement technique gas chromatography-ion mobility spectrometry.

The second aim is to examine associations between varying glycaemic states and signal(s) from the MIB

Project status:

The study was approved by the Ethics Committee KEK Bern. The first participant was included in December 2024. The results of this study are expected in Q3 2025.

Project site:

Diabetes Center Berne, Sitem Insel

Project team:

Sponsor:

BOYDSense

Study site: Universitätsklinik für Diabetologie, Endokrinologie, Ernährungsmedizin & Metabolismus (UDEM)

Inselspital, Universitätsspital

Principal investigator:

Prof. Dr. med. Markus Laimer

Project funding: Sponsor's internal funds

DCB's role:

As a Contract Research Organisation, we were delegated by the sponsor to support the clinical process, from the preparation of the clinical study plan, the submission of the approval by the Ethics Committee and Swissmedic, the monitoring of the site, the data cleansing and analysis to the preparation of the study report.

AID-JUNCT-Study: GIP/GLP-1RA as Adjunctive to Automated Insulin Delivery

Glycemic control in type 1 diabetes (T1D) remains a challenge, with ~32% of adults in Switzerland achieving an A1c target of <7%. The dual glucagon-like peptide-1 receptor agonists (GLP-1RAs) and glucose-dependent insulinotropic polypeptide (GIP)/GLP-1RAs has emerged as promising therapy in T1D. Retrospective studies have shown people with T1D can significantly improve glycemic control with a reduction in insulin dose and body weight when long-acting GLP-1RAs or GIP/GLP-1RAs are added to insulin therapy.

This study will assess glycemic control in people with T1D on a stable dose of long-acting GIP/GLP-1RA (Tirzepatide) as an adjuvant therapy to automated insulin delivery (AID). We are conducting a prospective, parallel, open-label, randomized clinical trial to test the hypothesis that available AID systems combined with GIP/GLP-1RA will lead to safe and more efficacious glycemic control than Standard of Care (SoC) during the assessment period. The outcome of this study will provide unique data about the safety and efficacy of using GIP/GLP1-RA as adjuvant therapy to AID systems.

Project status:

The study was approved by the Ethics Committee Northwestern and Central Switzerland EKNZ on 11 November 2024 and by Swissmedic on 08 November 2024. The first participant was included on 19 February 2025 and so far, 3 subjects are randomised in the study. The results of this study are expected in Q3 2026.

Project site:

Kantonsspital Olten, Olten

Project team:

Sponsor:

Prof. Dr. José García-Tirado, Universität Bern / Diabetes Center Berne (DCB)

Principal investigator:

PD Dr. med. Thomas Züger, Chefarzt

PhD student: Dr. med. Maria Carolina Fragozo-Ramos

Project funding:

Sponsor's internal funds

DCB's role:

Contract Research Organisation

Other Clinical Projects

Definition of clinical processes

The Clinical Team has continued to develop and improve standard operating procedures (SOPs) for clinical activities. This ensures consistency and compliance with Good Clinical Practice / ISO 14155 / ISO 20916 and maintains the high quality of research conducted and/or supported by DCB.

Clinical trial advice

The Clinical Team was available to support and advise the Innovation Challenge start-ups on how to plan their clinical trials and how to carry out the clinical evaluation of their medical devices. The start-ups made good use of this opportunity and received comprehensive advice on how to conduct studies in accordance with the principles of good clinical practice as well as on how to identify the best study designs to demonstrate the effectiveness of their medical devices.

Communication Team

Objectives / Activities / Priorities

Strategic and operational communication to support and position DCB across all levels – from conceptual planning to targeted implementation across relevant communication channels and audiences.

- Responsibility for the communication strategy of DCB, including continuous refinement and implementation across all DCB communication channels and stakeholder interfaces.
- Ensuring consistency in DCB's corporate design, identity, clarity, and tone of voice across all formats and touchpoints.
- Providing timely and accurate information on DCB's research and innovation in diabetes technology through appropriate communication formats and media.
- Enhancing DCB's digital visibility to ensure consistent recognition as a key player in diabetes technology and innovation, including within AI-based systems such as large language models.

Team



Sunjoy Mathieu
Communication Manager

Media impressions (selection)

Printmagazin

Innovation für eine bessere Zukunft mit Diabetes
Mit einem starken Fokus auf aktuelle Bedürfnisse, Forschung und Innovation, fördert die DCB Foundation weltweit Projekte, die das Leben von Menschen mit Diabetes erleichtern.

STIFTUNGSBEREICH

Das Diabetes Center Berner Foundation (DCB) ist eine private, unabhängige Schweizer Stiftung, die 2017 von Willy Michel gegründet wurde. Sie unterstützt weltweit Projekte im Bereich der Diabetes-Technologie durch Fachwissen, Zugang zu Forschungsstärkungen sowie finanzielle Ressourcen.

Die Zahl der weltweit an Diabetes erkrankten Menschen wird sich einer Studie in 'The Lancet' zufolge bis zum Jahr 2050 voraussichtlich mehr als verdoppeln. In weniger als drei Jahrzehnten können mehr als 1,5 Milliarden Menschen an der chronischen Stoffwechsellabilität leiden. Es gibt den Betroffenen eine kostenintensive, moderne und nachhaltige Therapie zu ermöglichen. Dazu braucht es neue Technologien!

FORSCHUNG IM FOKUS
Ziel der Stiftung ist es deshalb, Forschung in die Anwendung zu überführen, indem wissenschaftliche Erkenntnisse in praktischer Lösung umgesetzt werden. Ein weiterer Schwerpunkt liegt auf der Entwicklung innovativer und zugänglicher Therapieoptionen, um das Leben von Menschen mit Diabetes nachhaltig zu verbessern.

Die Stiftung unterstützt Forschungsprojekte in verschiedenen Bereichen. Dazu gehört die Entwicklung moderner Sensortechnologien zur Optimierung des Diabetes-Management oder der künstlichen Bauchspeicheldrüse. Zudem erforscht die DCB Foundation die Rolle von Smart Data, Künstlicher Intelligenz und Algorithmen in der Diabetes-Technologie und investiert in die Entwicklung nicht-invasiver Diagnose- und Behandlungsmethoden.

DIABETES-COMMUNITY
Besonders an der DCB Foundation ist auch die enge Zusammenarbeit mit der Diabetes-Community. Damit werden die Bedürfnisse und Erfahrungen von Menschen mit Diabetes direkt in die Forschungs- und Entwicklungsprozesse integriert.

Die Stiftung setzt ebenfalls auf Kooperationen mit internationalen Partnern aus Forschung und Industrie. Die Projekte helfen nicht nur, die Gesundheitsversorgung effizienter zu machen, sondern steigern auch die Lebensqualität von Menschen mit Diabetes.

Erkenntnisse in praktischer Lösung umgesetzt werden. Ein weiterer Schwerpunkt liegt auf der Entwicklung innovativer und zugänglicher Therapieoptionen, um das Leben von Menschen mit Diabetes nachhaltig zu verbessern.

Die Stiftung unterstützt Forschungsprojekte in verschiedenen Bereichen. Dazu gehört die Entwicklung moderner Sensortechnologien zur Optimierung des Diabetes-Management oder der künstlichen Bauchspeicheldrüse. Zudem erforscht die DCB Foundation die Rolle von Smart Data, Künstlicher Intelligenz und Algorithmen in der Diabetes-Technologie und investiert in die Entwicklung nicht-invasiver Diagnose- und Behandlungsmethoden.

KONTAKT
DCB Foundation
Friedbergstrasse 1 | 3010 Bern
E: foundation@dcberne.com
www.dcberne.com/de/stiftung

Finanz und Wirtschaft 3/2025

Innovation im Diabetesmanagement fördern

Das Diabetes Center Berner Foundation startet zum vierten Mal die Open Innovation Challenge, um innovative Projekte im Diabetesmanagement gezielt zu fördern.

Das Diabetes Center Berner Foundation (DCB) hat sich zum Ziel gesetzt, die Lebensqualität von Menschen mit Diabetes zu verbessern. Ein zentraler Bestandteil dieser Mission ist die Förderung von Innovationen im Diabetesmanagement. Die Open Innovation Challenge ist eine internationale Wettbewerbsveranstaltung, bei der innovative Projekte im Bereich des Diabetesmanagement gefördert werden.

Die Challenge ist ein Wettbewerb, bei dem Teams aus Wissenschaftlern, Ingenieuren, Designern und anderen Experten Ideen für innovative Lösungen im Bereich des Diabetesmanagement einbringen. Die besten Ideen werden ausgewählt und finanziell unterstützt, um sie in die Praxis umzusetzen.

Die Challenge ist ein wichtiger Bestandteil der Open Innovation-Strategie der DCB Foundation. Sie ermöglicht es, innovative Ideen von Menschen mit Diabetes und anderen Experten zu identifizieren und zu fördern. Die Challenge ist ein wichtiger Bestandteil der Open Innovation-Strategie der DCB Foundation. Sie ermöglicht es, innovative Ideen von Menschen mit Diabetes und anderen Experten zu identifizieren und zu fördern.

D-Journal 9/2024

Newsletter

The DCB LinkedIn newsletter is published regularly and now reaches more than 2,300 subscribers. It is available on both LinkedIn and the DCB website and provides information on current topics in diabetes technology research and innovation, as well as insights from the DCB team.

Our latest on LinkedIn

DCB Newsletter #2/25: DID YOU KNOW... that staying active with Type 1 Diabetes doesn't have to be...
Dear Community, For many people living with Type 1 Diabetes (T1D), physical activity can bring unique challenges...

DCB Newsletter #1/25: INSIDE DCB – Interview with Lisa Koch
Dear Community, We are thrilled to present you with the next episode of our series "INSIDE DCB" – this time, with an...

DCB Newsletter #5/24: INSIDE DCB – Our Milestones in 2024
Dear DCB community – as we approach the end of this year, we want to take the opportunity to look back on our team's...

DCB Newsletter #1/24: DID YOU KNOW... that there are Rare Types of Diabetes?

3 · APR · 2024 | LINKEDIN

Dear Community,

we are happy to present you with the next episode of our series "DID YOU KNOW" in which we publish interesting facts about life with diabetes that you might not know yet. In this edition, on the special occasion of Rare Disease Day, we want to focus on the rare and lesser known types of diabetes. Enjoy the read!



Operations Team

Objectives / Activities / Priorities

Finance / HR

Implementation of the strategy and business plan, as well as ensuring accounting and financial reporting are in compliance with applicable laws and regulations.

Facility and Lab Management / EHS

Ensuring the smooth operation of the DCB facilities and equipment, safeguarding health and safety, and providing services to support project implementation.

Quality Management

Ensuring compliance with ISO 9001 requirements and supporting effective and efficient workflows.

Team



Lorenz Burkhalter
CFO/COO/HRM



Corinne Nydegger
Finance / Operations Assistant



Ivona Weinaug
HR Specialist

Research

Associated research groups:

samlab (Sensing & Monitoring Lab)
led by Prof. Dr. phil. Lilian Witthauer

PrecisionLab
led by Prof. Dr. José Garcia-Tirado

TrimLab (Translational Immunometabolism Lab)
led by Prof. Dr. Maria Louisa Balmer

Machine Learning for Medicine Lab
led by Prof. Dr. Lisa Koch

INSPIRE Lab
led by Dr. Maren Schinz

samlab (Sensing & Monitoring Lab)

At the core of personalised healthcare lies the ability to accurately assess an individual’s health status and monitor disease progression. Conventional sensing methods often lack the sensitivity and specificity required for early detection and tailored treatment approaches.

samlab is committed to advancing sensing technologies that support improved diagnosis and management of a wide range of health conditions. A particular focus of their research is the development of innovative tools for managing chronic diseases such as diabetes.

Their current work aims to take these technologies further by developing next-generation sensing platforms that deliver comprehensive, real-time data—not only on glucose levels but also on other key physiological parameters. These advancements are designed to support more informed decisions around insulin dosing, nutrition, and physical activity, thereby enhancing quality of life and long-term outcomes for people living with diabetes.

Team



Prof. Dr. phil. Lilian Witthauer
Tenure Track Professor



Seif Ben Bader
Postdoctoral Researcher



Celal Bahtiyar
Research Assistant



Livia Brun del Re
Intern



Annina Burgherr
Doctoral Student (Dr.med.)



Sabina Fazli
Master’s Student



Sandro Gantner
Master’s Student



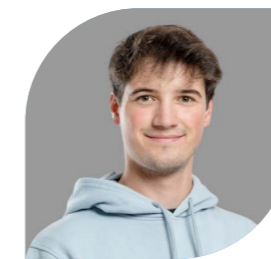
Camilo Mendez Schneider
PhD Student



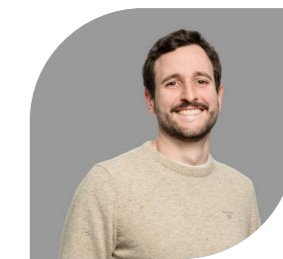
Mahsa Nasehi
PhD Student



Cléo Nicolier
Research Assistant



Corvin Ravaoli
Doctoral Student (Dr.med.)



Guglielmo Risi
Postdoctoral Researcher



Ben Scattolo
Doctoral Student (Dr.med.)



Saiyyna Stepanova
Postdoctoral Researcher



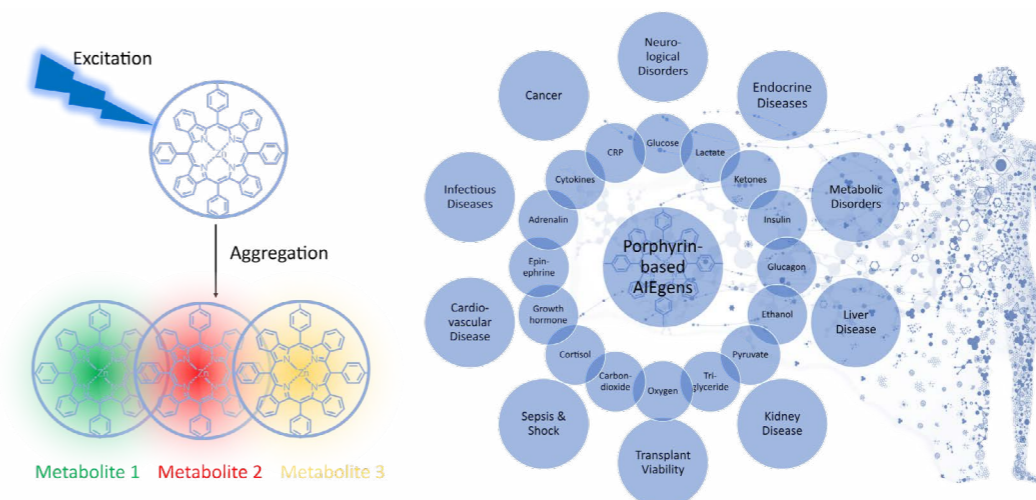
Martin Varga
PhD Student

Research Projects

Illuminating Personalized Medicine: Porphyrin-based Aggregation-induced Emission Generating Molecules for Continuous Multi-Metabolite Monitoring

In this project, the team is developing a new sensor technology to enhance the monitoring of multiple metabolites. The approach is based on special molecules known as aggregation-induced emission luminogens (AIEgens), which emit exceptionally bright light when they cluster together.

These AIEgens are engineered to emit light in different spectral regions, enabling the simultaneous detection of various metabolites such as glucose, lactate, and ketones. They are embedded in a biocompatible matrix and applied to the tip of an optical sensor, which is then integrated into a wearable device.



This minimally invasive system allows for continuous monitoring of metabolic activity in the interstitial fluid beneath the skin. It holds significant potential

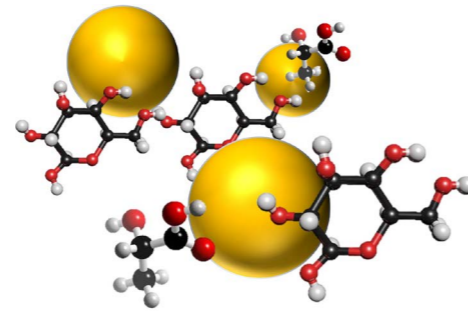
to improve diagnosis and enable more personalised treatment strategies for conditions such as diabetes and cardiovascular diseases

Nanoparticle-Based Platforms for Bioimaging and Metabolite Sensing: Design and Functionalisation of Nanoparticles for Multimodal Imaging and Metabolite Sensing

By combining gold nanoparticles with fluorescent molecules, the team explores multimodal imaging techniques that utilise both plasmonic and photoluminescent properties.

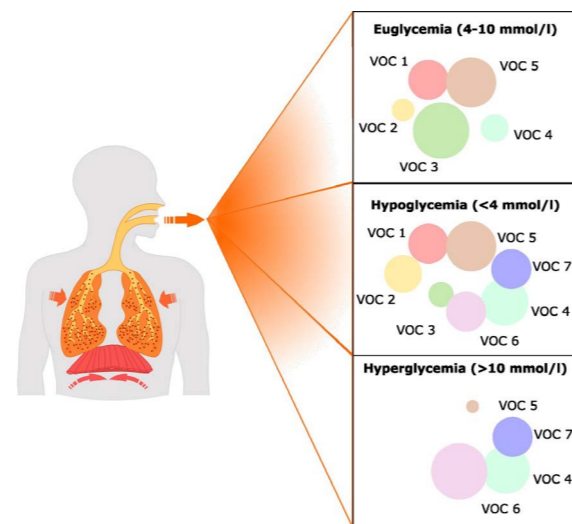
The research focuses on targeted functionalisations to achieve sensitive and selective detection of specific metabolites, with potential applications in real-time cellular imaging and biomedical diagnostics. Through interdisciplinary methods, the approach

aims to expand the capabilities of nanomaterial-based sensing technologies in support of personalised medicine.



Volatile organic compounds in individuals and breath analysis in individuals with diabetes

The main goal of this research area is to identify distinctive patterns of Volatile Organic Compounds (VOCs) in breath and their dependence on blood glucose values in individuals with diabetes. VOCs are emitted by the human body, among which breath is the most important carrier. The breath contains a diverse array of VOCs that offer valuable insights into the body's metabolic activities, including the glucose metabolism.



The Moonwalk project: Investigating the relationship between glucose values and sleep pattern

People with diabetes must carefully manage their blood glucose levels to avoid both short- and long-term health complications. While insulin injections are an effective treatment, they also increase the risk of hypoglycaemia — a condition characterised by abnormally low blood sugar levels. Hypoglycaemia often occurs at night and can lead to serious consequences such as falls, cardiac events, and reduced quality of life. Common symptoms include shaking, irregular breathing, and abnormal movements. Managing diabetes can be particularly challenging for older adults in long-term care settings, due to additional health conditions and frequent changes in caregivers.

In the Moonwalk project, the research team investigates the potential link between glucose levels

and motion patterns during sleep in individuals with diabetes. To achieve this, they use a ceiling-mounted QUMEA radar sensor to monitor nocturnal movements, alongside wrist-worn smartwatches to collect physiological data.

The study involved 37 participants over a period of ten days. Data collection was completed this year, and the team is now working on algorithms to detect hypoglycaemia symptoms.



The Desire Project: Developing a delay-free glucose sensing technology.

The aim of this research project is to develop a novel toolset for real-time glucose sensing — a critical step towards the creation of an artificial pancreas, a closed-loop system designed to replicate the function of a healthy pancreas. Continuous glucose monitoring (CGM) is already widely used in diabetes management and has been shown to improve glucose control and overall health outcomes.

However, current CGM systems face limitations due to a time lag in glucose measurement. This delay arises from both physiological factors, such as the measurement taking place in subcutaneous tissue, and technological factors, including sensor design and filtering algorithms. As a result, inaccuracies can

occur during periods of rapid glucose fluctuation, such as after meals, during exercise, or during illness. These inaccuracies may complicate treatment decisions and add to the complexity of maintaining stable glucose management.

The research team aims to address these challenges by developing a new optical glucose sensor. This technology has the advantage of not requiring direct contact with the analyte (glucose), which could offer more accurate and timely measurements compared to existing CGM devices.

PrecisionLab



PrecisionLab develops tools and methods to enable precision therapies for people with diabetes and related metabolic diseases. Combining control systems engineering, mathematical modelling, and computer science, the group aims to make diabetes care safer, more effective, and more personalized.

Team



Prof. Dr. José García-Tirado
Tenure Track Professor



Gabriel Bunselmeyer
Software Developer



Clara Escorihuela Altaba
PhD Student



Dr. med. María Carolina Fragozo-Ramos
PhD Student



Nathan Hoffman
Master's Student



Ceren Asli Kaykayoglu
PhD Student



Eleonora Manzoni
Postdoctoral Fellow



Keidy Luz Morales Rodelo
PhD Student



Dr. Vihang Kumar Naik
Postdoctoral Fellow



Anna Tief
Project Manager



Thea Waldleben
Research Assistant



Tudorita Zaharia
Research Assistant

Research Projects

First in-human study of our hybrid automated insulin delivery (hAID) system

The group is developing a hybrid automated insulin delivery system that dynamically adjusts insulin doses using continuous glucose monitoring (CGM) data. The system is based on a Model Predictive Control (MPC) algorithm, supported by dedicated hypo- and hyperglycemia supervisor modules. Built-in safety checks and remote monitoring features ensure a

reliable and secure system operation.

A first-in-human clinical trial is about to begin, aiming to evaluate the system's safety. This marks a significant milestone toward delivering an automated, user-friendly solution for managing type 1 diabetes.

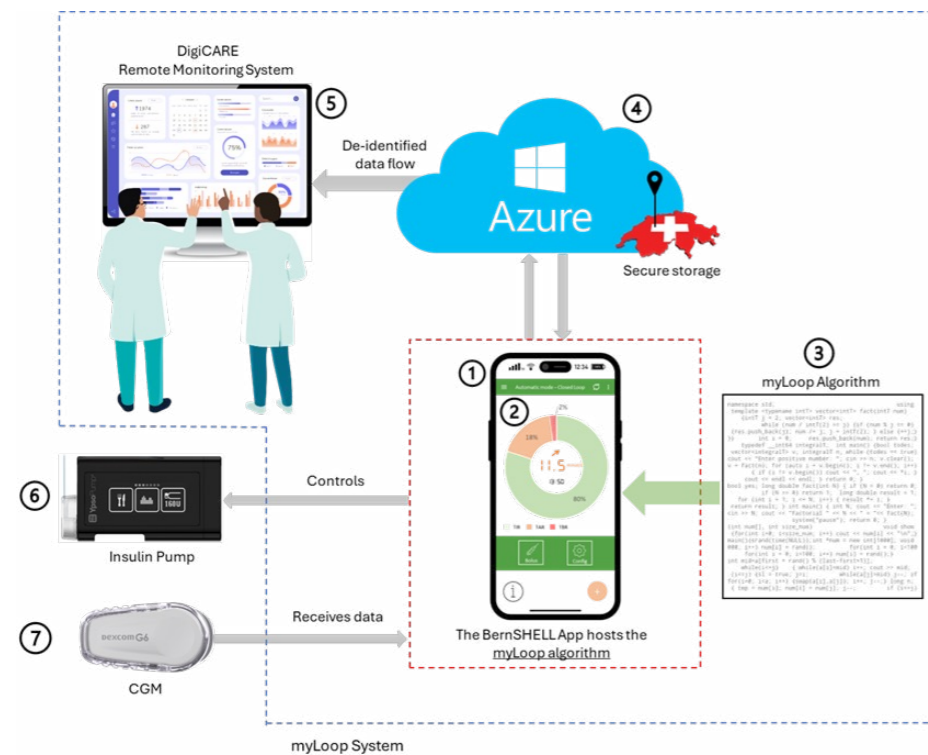


Figure 1. System Architecture and Related Devices. The components in the figure are: 1) Smartphone; 2) BernSHELL; 3) myLoop Algorithm; 4) myLoop Cloud; 5) DigiCARE; 6) Insulin pump; 7) CGM.

Adjuvant therapies and the AID-JUNCT study

Achieving optimal glucose control remains challenging, with only about 32% of adults with type 1 diabetes in Switzerland reaching the recommended HbA1c target below 7%. Emerging therapies such as GLP-1 receptor agonists and dual GIP/GLP-1 receptor agonists have shown promising results on glucose control, reducing insulin requirements, and

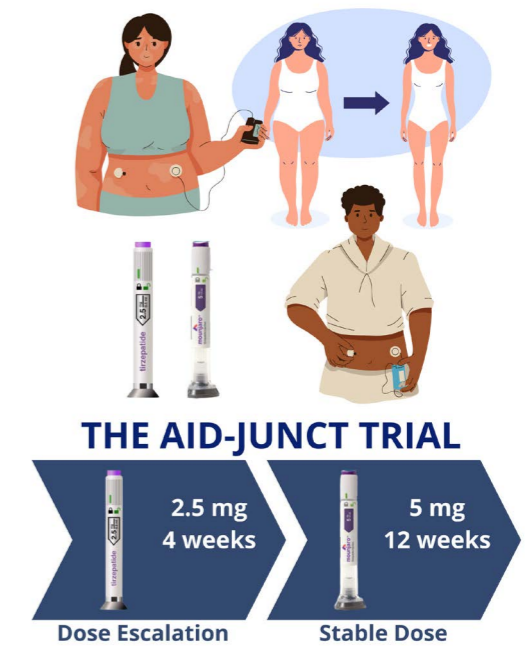
supporting weight loss.

The AID-JUNCT study (ClinicalTrials.gov ID NCT06630585) is part of the research group. It is a randomized clinical trial investigating whether the addition of tirzepatide—a once-weekly GIP/GLP-1 receptor agonist—to automated insulin delivery (AID)

systems results in safer and more effective glucose control compared to standard care (AID alone).

The study encompasses 18 weeks of clinical evaluation using CGM data and activity trackers. Recruitment began on February 14, 2025, and is currently ongoing. The clinical evaluations are being conducted at Kantonsspital Olten.

This study will provide unique data on the safety and efficacy of tirzepatide as an adjunct therapy to AID. The results could represent a paradigm shift in clinical practice, expanding the focus beyond insulin therapy.



Precision Medicine initiative with McGill University

PrecisionLab is part of the University of Bern–McGill Partnership in Precision Medicine, launched in 2024. This collaboration aims to address major health challenges, including diabetes and obesity, through joint research, knowledge exchange, and the development of innovative precision health solutions to improve patient care globally.

Trim Lab

Team



Prof. Dr. Maria Luisa Balmer
SNSF-Eccellenza Professor,
Group Leader



Andrea Celoria
PhD Student



Seline Domeni
Student



Kristyna Filipova
Laboratory Technician



Dr. Valentina Huwiler
Research Assistant



Danai Chrysoula Kokona, MSc
PhD Student



Dr. Yousef Maali
Research Assistant



Melanie Scalise
PhD Student



June Stone
PhD Student



Sabrina Suter
Student



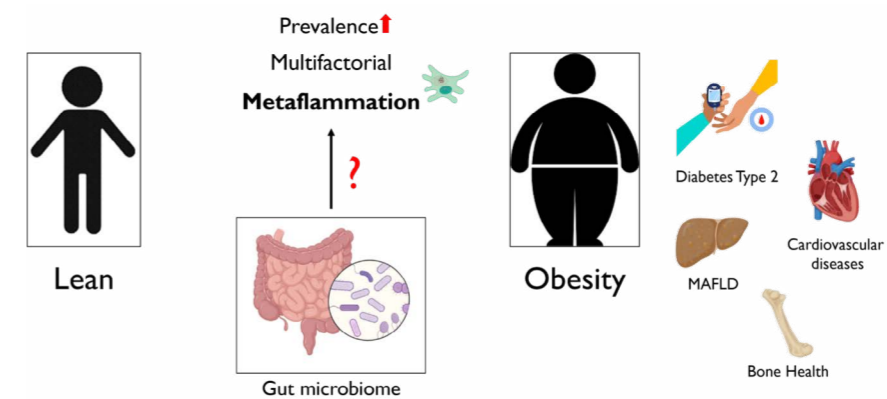
Dr. Janina Zünd
Research Assistant

Research Projects

Cause and effect relationship between Obesity and gut microbiome

Global rises in metabolic diseases such as obesity and diabetes pose severe medical and socio-economic threats, influenced by a variety of both genetic and environmental factors. Chronic inflammation links these diseases, suggesting an impact on the immune system. The human intestinal flora, especially the metabolic products it produces, appear to play a role in the development of obesity and diabetes.

To understand the underlying mechanisms, our project utilizes innovative methods (gnotobiotics, metagenomics and metabolomics) to explore the relationship between gut flora, metabolism and immune function. By unraveling these relationships, we aim to lay the foundation for innovative strategies to prevent and treat these diseases



FibreGum-Study



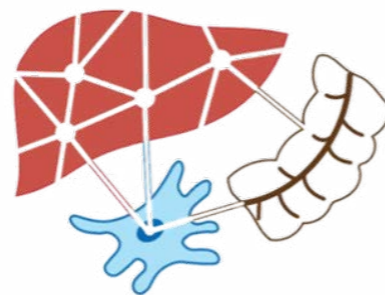
Obesity affects 1 in 6 Swiss children, leading to rising health and socioeconomic challenges. It's a chronic

condition and a risk factor for major diseases. Preventing childhood obesity is crucial for healthier futures. We're tackling this issue with "FibreGum," a dietary fiber-enriched chewing gum, in collaboration with Delica AG. Our goal is to enhance gut health, reduce snacking, and improve metabolic markers in children and adolescents. We're conducting a placebo-controlled clinical trial involving 105 obese participants aged 10-16.

Wound infection project

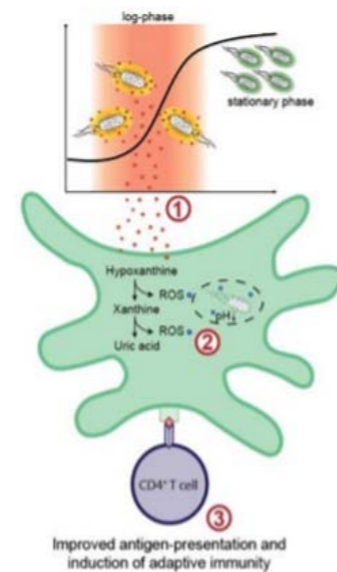
Obesity and diabetes, which are both rapidly increasing in prevalence world-wide, are considered multifactorial in their pathogenesis, including genetic and environmental factors. Amongst the latter, the gut microbiota and bacteria-derived metabolites have been described to contribute to disease development. Obesity and diabetes are both characterized by a chronic low-grade inflammatory state (“metaflammation”). However, despite the chronic immune activation, obese and diabetic patients are considered immunosuppressed leading to an increased risk for and inferior outcome during infections. This results in increased morbidity and mortality. The

mechanisms leading to immune dysfunction and increased infections in obesity and diabetes are unclear and the main focus of this project.



Hypoxanthine Project

The human gut microbiota, a complex and dynamic community of microorganisms residing in our digestive tract, plays a pivotal role in health and disease. Emerging research reveals a fascinating interplay between the gut microbiota, the immune system, and metabolism. The gut microbiome engages in a constant dialogue with immune cells, educating and regulating them, which in turn maintains gut health and guards against pathogens. This project aims to unravel the hidden mechanisms underlying the interactions between bacterial metabolites in the microenvironment and the activation of immune cells, by in particular focusing on the impact of hypoxanthine (HPX) on dendritic cell metabolism and biological function. Preliminary data showed that HPX is highly produced by bacteria expanding logarithmically and it can be sensed by DCs, fueling their activation.



Machine Learning in Medicine Lab

About the Machine Learning in Medicine Lab

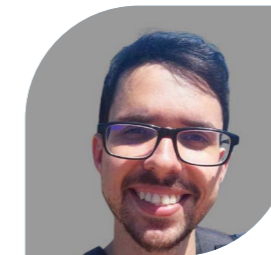
The Machine Learning in Medicine Lab focuses on developing trustworthy and interpretable artificial intelligence methods for use in clinical and biomedical applications. The team’s methodological interests include interpretable machine learning, generalisability and performance prediction, automated identification of relevant subgroups, and techniques for learning structured and disentangled data representations.

In terms of application, the lab’s research spans a range of areas, including medical image analysis – such as image classification, segmentation, and modelling of disease progression – as well as the interpretation of continuous glucose monitoring (CGM) data. This includes work on CGM forecasting and the prediction of individual risk factors, contributing to more personalised and reliable decision support in medicine.

Team



Prof. Dr. Lisa Koch
Tenure track professor



Alceu Bissoto
Postdoctoral Researcher



Tim Flühmann
PhD Student



Trung Dũng Hoàng
PhD Student

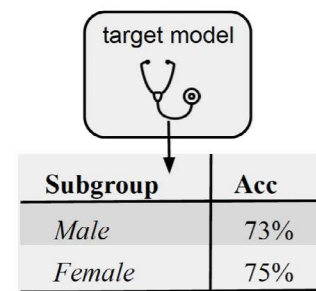
Research Projects

Subgroup Discovery for Monitoring ML Performance in Hidden Stratifications

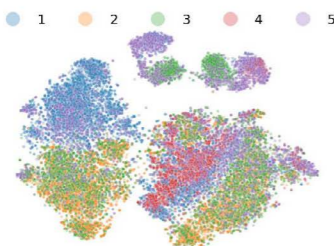
One of the projects at the Machine Learning in Medicine Lab explores the use of subgroup discovery to improve the evaluation of machine learning models in medical imaging. Traditional subgroup analysis—commonly used in clinical research—often fails to capture nuanced performance differences when applied to deep learning models. Although demographic attributes such as age, sex, or ethnicity are typically used to stratify results, these standard metadata categories do not necessarily align with how AI models make predictions. As a result, critical variations in performance may remain undetected.

This project investigates subgroup discovery methods as an alternative means of performance monitoring. These methods identify previously unrecognised patterns and groupings within the data that go beyond predefined metadata categories, thereby offering more informative insights into model behaviour. A major challenge lies in validating the discovered subgroups, as no ground truth labels exist in real-world datasets for such latent structures. Nonetheless, the research team argues that subgroup discovery represents a promising and practical approach for enhancing performance monitoring and validation of machine learning systems in clinical applications.

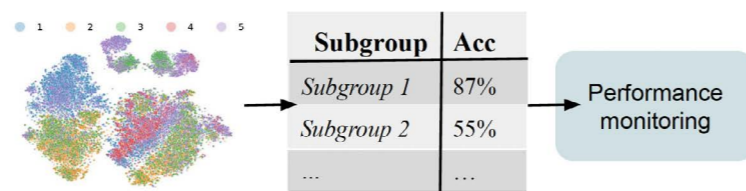
a. Traditional subgroup analysis



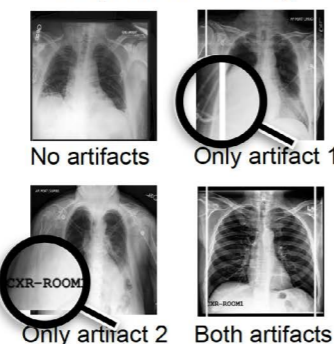
b. Subgroup discovery



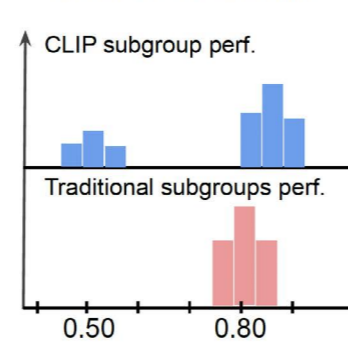
c. Proposed: subgroup performance analysis in hidden stratifications



d. Synthetic setting



e. Real-world scenario

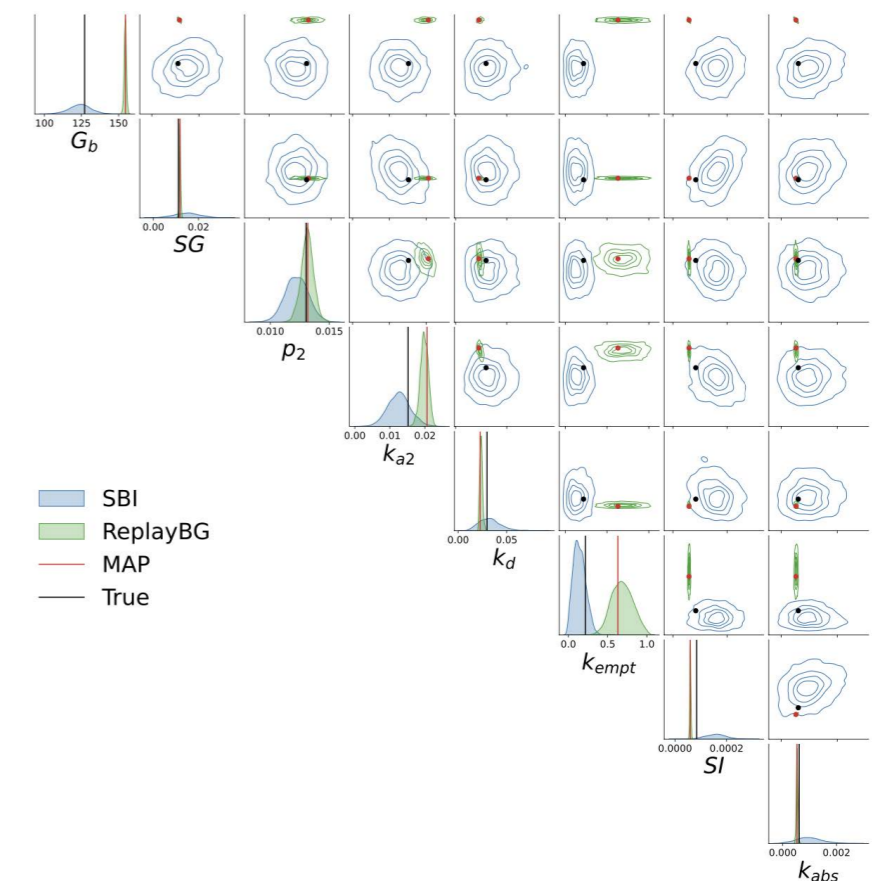


Simulation-Based Inference for Digital Twins in Type 1 Diabetes

The interaction between glucose, insulin, and meal intake over time can be described using complex physiological models based on systems of differential equations. Key model parameters—such as insulin sensitivity—are highly individual and must be identified from observed data in order to create a digital twin of a person’s metabolic system. Such digital twins can support personalised treatment planning, glucose forecasting, and real-time decision support.

demanding, non-amortised, and often rely on steady-state assumptions that are rarely met in real-world settings. To address this, the research team develops a simulation-based inference (SBI) approach using Neural Posterior Estimation (NPE). This enables efficient, amortised inference of both physiological parameters and initial conditions, while producing full posterior distributions. These results allow for uncertainty quantification and support more robust, informed decision-making. Future work will address model misspecification and missing CGM data to enhance reliability under practical conditions.

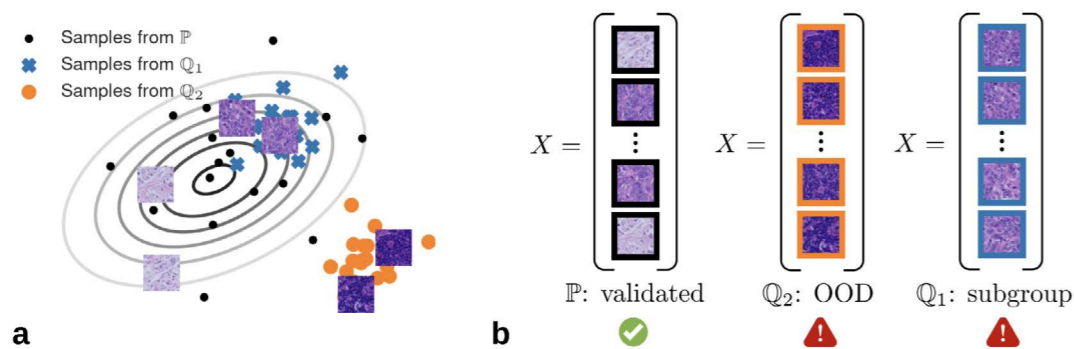
Estimating these parameters presents a challenging inverse problem. Common methods like Markov Chain Monte Carlo (MCMC) are computationally



Distribution shift detection for postmarket surveillance of medical AI algorithms

Distribution shifts remain a critical challenge for the safe deployment of regulated medical AI systems, as they may compromise real-world performance if not properly detected. Such shifts can occur after market approval, for example when algorithms trained on heterogeneous data from multiple acquisition settings are applied in hospitals with lower-quality imaging or other site-specific characteristics. Additionally, population shifts—such as the over-representation of certain ethnic groups—can further affect model reliability.

To address this, the research team explored a range of deep learning-based methods for detecting distribution shifts in medical imaging data. They implemented and evaluated various detection techniques on simulated dataset shifts, focusing on both changes in population composition and data acquisition settings. The methods were assessed for their ability to identify subgroup-specific and out-of-distribution shifts, with the goal of supporting more reliable post-market surveillance of AI-driven medical products.

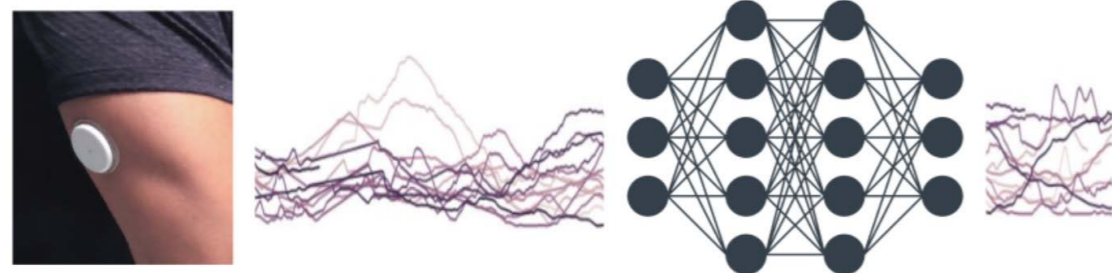


Timeseries transformers for analysing continuous glucose monitoring data

Frequent glucose monitoring—particularly through continuous glucose monitoring (CGM) devices—is a key element in diabetes management. Despite their widespread use, maintaining stable glucose levels remains a complex challenge, influenced by a range of factors such as obesity, age, sex, physical activity,

and other cardiometabolic risk factors. These interactions are not yet fully understood, but a deeper understanding will be essential for the development of next-generation, adaptive treatment systems.

The research team investigates advanced machine



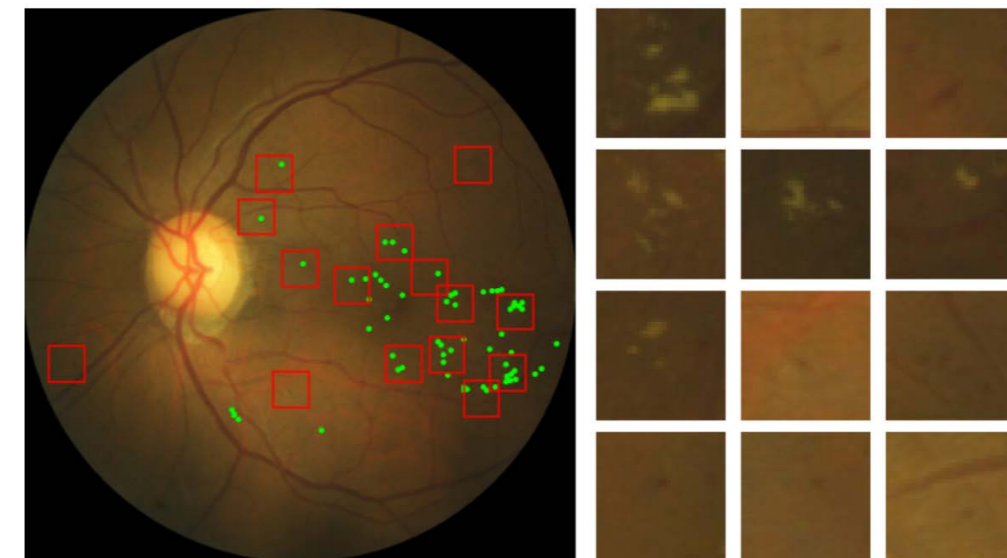
learning approaches to better capture these complex dynamics. Their work includes the development of transformer-based models for training large-scale

CGM data representations, methods for glucose forecasting, and the prediction of cardiometabolic risk factors with the goal of identifying novel biomarkers.

Interpretable methods for detecting diabetic retinopathy

Deep learning models used in medical imaging often suffer from a lack of interpretability, raising ethical concerns and limiting their adoption in clinical settings. Interpretation typically relies on post-hoc saliency map techniques (i.e., visual overlays that highlight the regions of an image deemed important by the model); however, these frequently fail to provide actionable insights for clinicians and do not directly reveal the decision-making mechanisms of the model.

To address these limitations, the research team explores two complementary approaches. First, they investigate inherently interpretable models that combine the feature extraction strengths of deep neural networks with the transparency of sparse linear models. Second, they develop visual counterfactual explanations—realistic synthetic images that answer questions such as “what would this image have looked like if the patient were healthy?”—in order to visualise and better understand a model’s internal reasoning.



INSPIRE Lab

Team



Dr. Maren Schinz
Project Lead Insulin Activity Research



Dr. Stefanie Dobitz
Senior R&D Manager



Danai Kokona
Research Associate / PhD Candidate

Research Project

Insulin Activity Project: Innovation for Everyday Insulin Use

Insulin can lose its effectiveness through heat, light or mechanical stress – yet how active it remains after storage and under real-life treatment conditions has barely been studied. The Insulin Activity Project aims to change that: we investigate insulin degradation under thermal stress and are developing the first methods to make activity loss measurable.

Our current focus lies on experimental analysis: using biophysical techniques alongside functional activity assays, we investigate how heat and storage affect insulin’s structure and efficacy. In parallel, we are establishing an in-vitro reference method at DCB to characterize insulin activity – forming the basis for a model that links structural changes to functional

loss. This will lay the scientific foundation for a future point-of-care testing system.

The project is supported by a research grant from the Diabetes Center Berne and is conducted in close collaboration with FHNW, CSEM, and partners from industry and science. In 2024, the project advanced into its next phase with CHF 659,000 in Innosuisse funding. The emerging spin-off Beyond Diagnostics is supported by the DCB. A dedicated Lived Experience Panel ensures the patient perspective is embedded from the start. The long-term goal: a portable solution to verify insulin quality – with strong potential for patients, professionals, and the pharmaceutical industry.



Quality

DCB is ISO 9001 certified

Diabetes Center Berne (DCB) has been ISO 9001 certified since August 2022. The certification is valid until August 2028 and has been maintained following three successful audits in May 2023, April 2024 and March 2025, during which no objections were identified.

Quality management system

Since April 2022, DCB has had a flexible, process-oriented and electronic management system (EMS) in place, in accordance with ISO 9001:2015. This covers not only the general quality processes but also the core clinical processes based on ICH-GCP. This means that various functions such as the review/approval process can be carried out electronically, making training processes easier to plan and improving employees’ level of expertise.



Imprint



Imprint

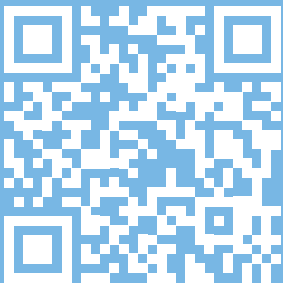
Publisher: DCB Research AG

Text and concept: DCB Research AG

Design: HYVE Innovate GmbH

Photos: Sandra Blaser

This annual report was written in German and English.



DCB Research AG
Freiburgstrasse 3
3010 Bern
Schweiz
www.dcberne.com
medien@dcberne.com